

SECTION 33, T.7N., R.2W., S.L.B. & M.

35

PLAIN CITY DISTRICT & PLAIN CITY

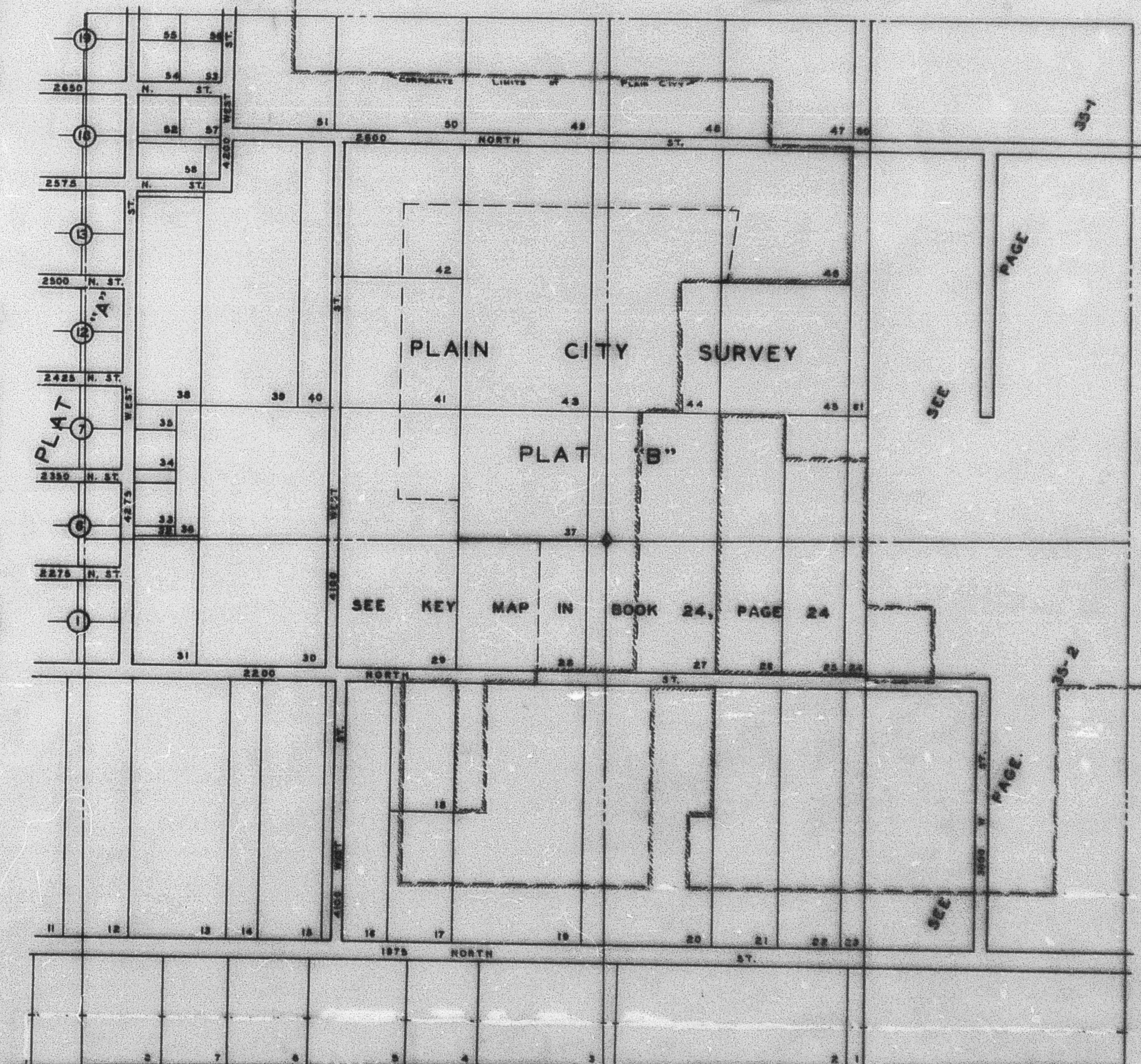
TAXING UNITS: 19, 21

SCALE 1"=400'

PREFIX: 19-055
ALSO SEE P. 20-12.2

SEE PAGE 25

SEE PAGE 24



SEE BOOK 15, PAGE 13

SEE BOOK 15, PAGE 10